



# Z5420

## Floor Mounted Siphon Jet Service Sink

TAG \_\_\_\_\_



### Z5420

- 27" [686 mm] x 20-1/2" [521 mm]
- Vitreous china
- Antimicrobial ceramic glaze to create a permanent surface that inhibits the growth of stain and odor causing mold, mildew and bacteria, thus minimizing the need for cleaning and water to cleanse the bowl.
- Floor mounted service sink
- Siphon jet action
- Integral flushing rim
- 1-1/2" top spud
- Water surface: 10" x 10"
- Trap seal depth: 3-1/8"
- Shipping Weight: 60 lbs.

### Z5420 Series

#### Recommended Trim:

- Z6000AV-BWN1** AquaVantage® AV exposed closet flush valve with bedpan washer.

#### Optional Trim:

- Z60843AV-BWN** AquaVantage® AV exposed clinical sink flush valve with bedpan washer and service sink faucet.
- Z85500-WM** Wall-mounted double foot pedal valve.

### Engineering Specification:

- Z5420** Vitreous china, floor mounted blowout service sink with integral flushing rim, antimicrobial ceramic glaze and 1-1/2" top spud. Front & side stainless steel rim guards included.

This space is for Architectural/engineering Approval

*These dimensions and specifications are subject to change without notice.*

*Fixture dimensions meet ANSI/ASME standard A112.19.2 and CAN/CSA B45 requirements.*

See Zurn One Systems for suggested packages.

### Zurn Industries, Commercial Fixtures

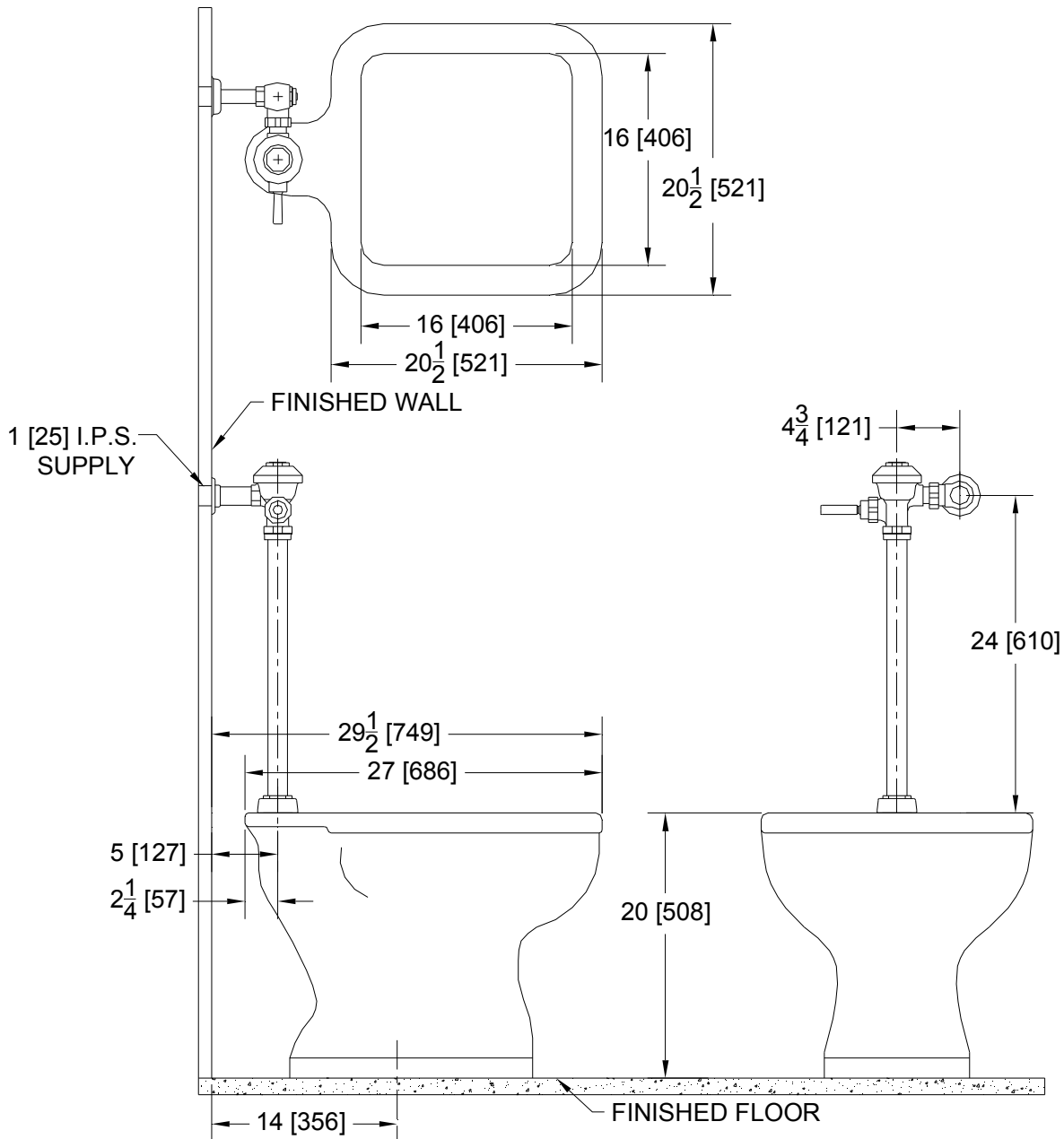
5900 Elwin Buchanan Drive - Sanford, NC 27330 · Phone: 919-775-2255 · Fax: 919-775-3541 · www.zurn.com

# Z5420

## Floor Mounted Siphon Jet Service Sink Rough-in

TAG \_\_\_\_\_

Rough-in dimensions for Z5420 Series  
• Z5420 Service Sink



*These dimensions and specifications are subject to change without notice.*

*Note:  
Z6017AV shown above*

*Fixture dimensions meet ANSI/ASME standard  
A112.19.2M and CAN/CSA B45 requirements.*



**Zurn Industries, Commercial Fixtures**

5900 Elwin Buchanan Drive - Sanford, NC 27330 · Phone: 919-775-2255 · Fax: 919-775-3541 · www.zurn.com